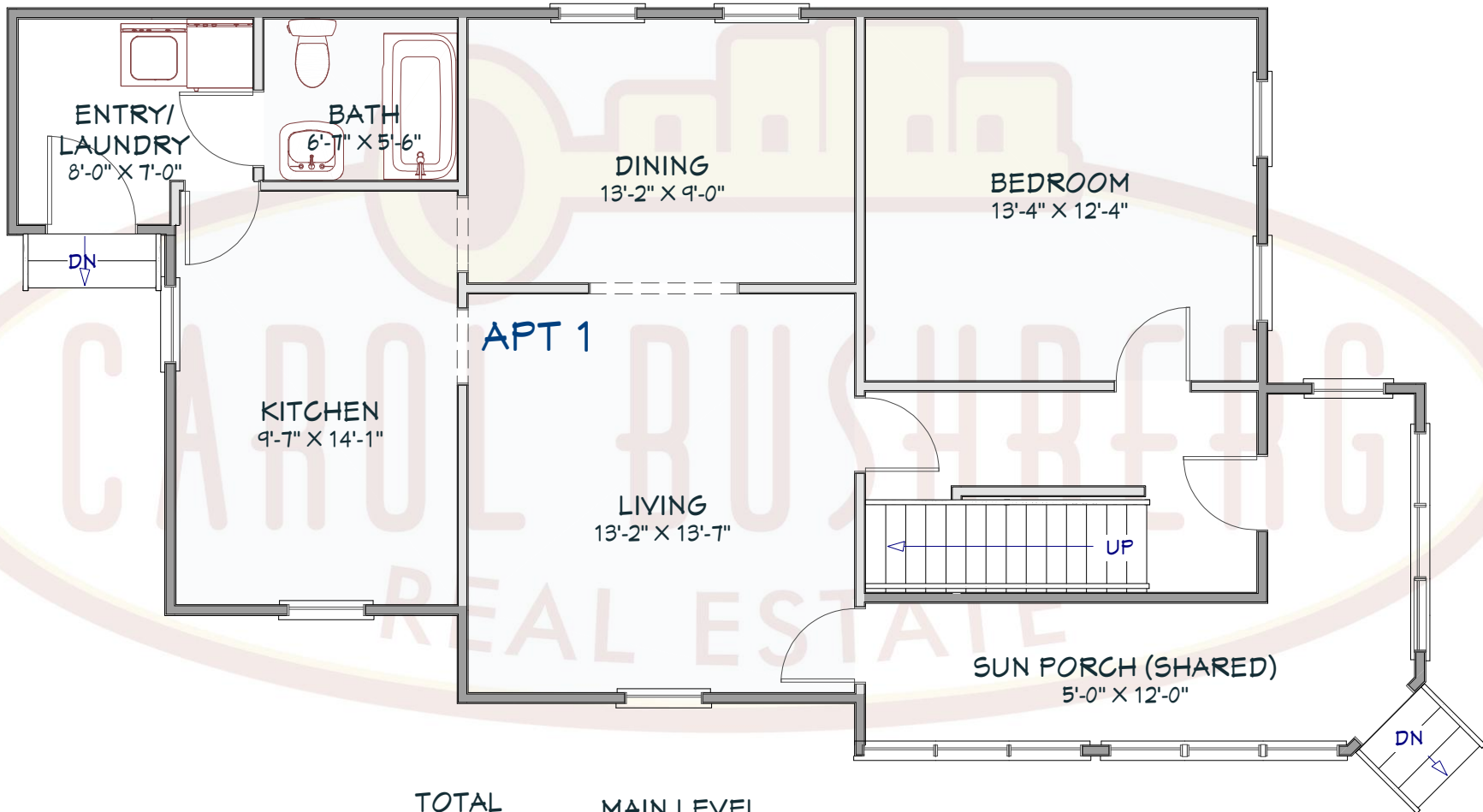


302 Park Place
Ithaca, NY 14850
Main Level

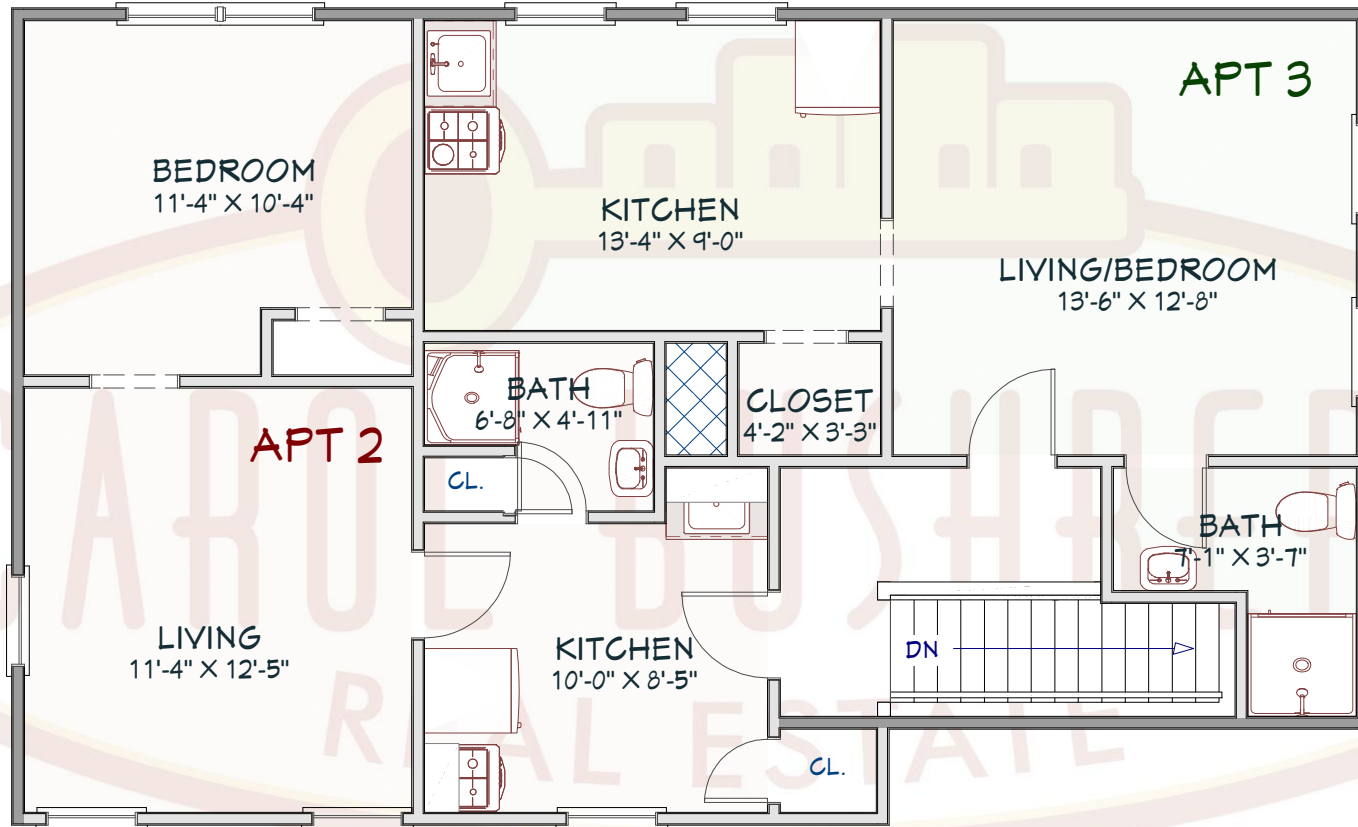


TOTAL
LIVING AREA
1847 SQ FT

MAIN LEVEL
LIVING AREA
986 SQ FT

Please note: This plan was drawn by a Realtor, not an architect. As a result, the measurements are approximate and some elements of the property may be missing altogether. We do our best.

302 Park Place
Ithaca, NY 14850
Upper Level



UPPER LEVEL
LIVING AREA
861 SQ FT

Please note: This plan was drawn by a Realtor, not an architect. As a result, the measurements are approximate and some elements of the property may be missing altogether. We do our best.