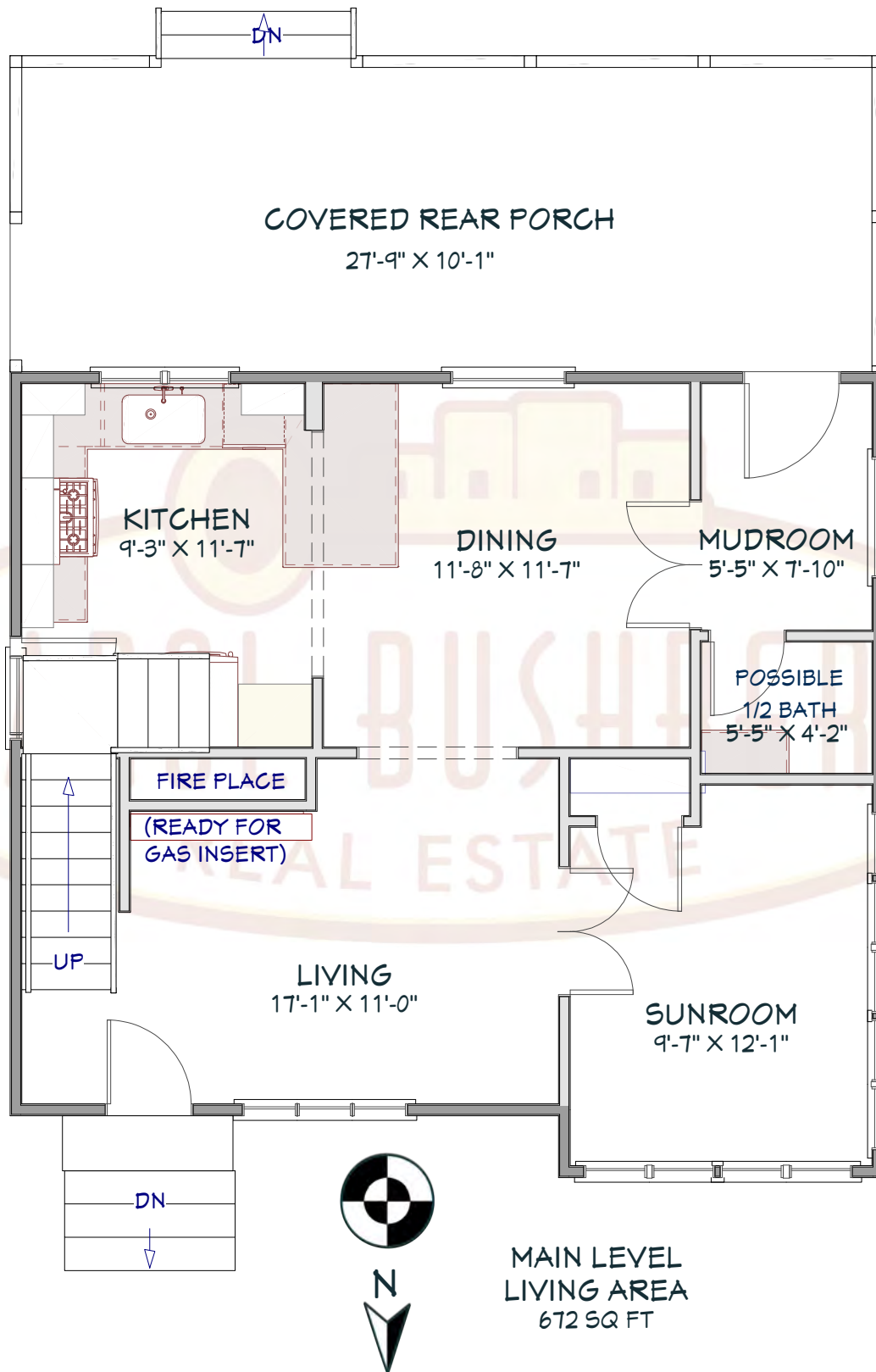


109 Worth Street  
Ithaca, NY 14850  
Main Level

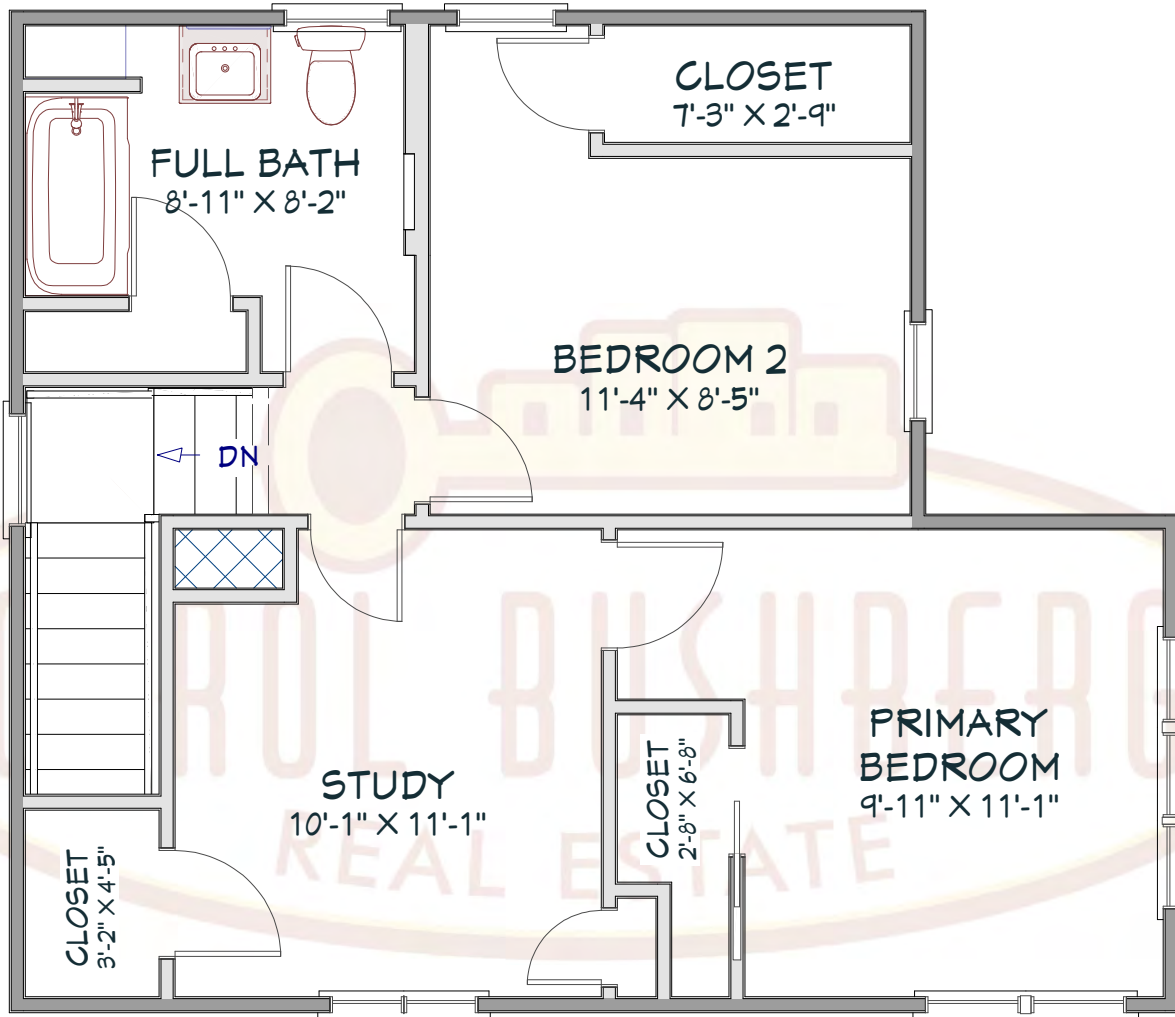


Please note: This plan was drawn by a Realtor, not an architect. As a result, the measurements are approximate and some elements of the property may be missing altogether. We do our best.



Please note: This plan was drawn by a Realtor, not an architect. As a result, the measurements are approximate and some elements of the property may be missing altogether. We do our best.

109 Worth Street  
Ithaca, NY 14850  
Upper Level



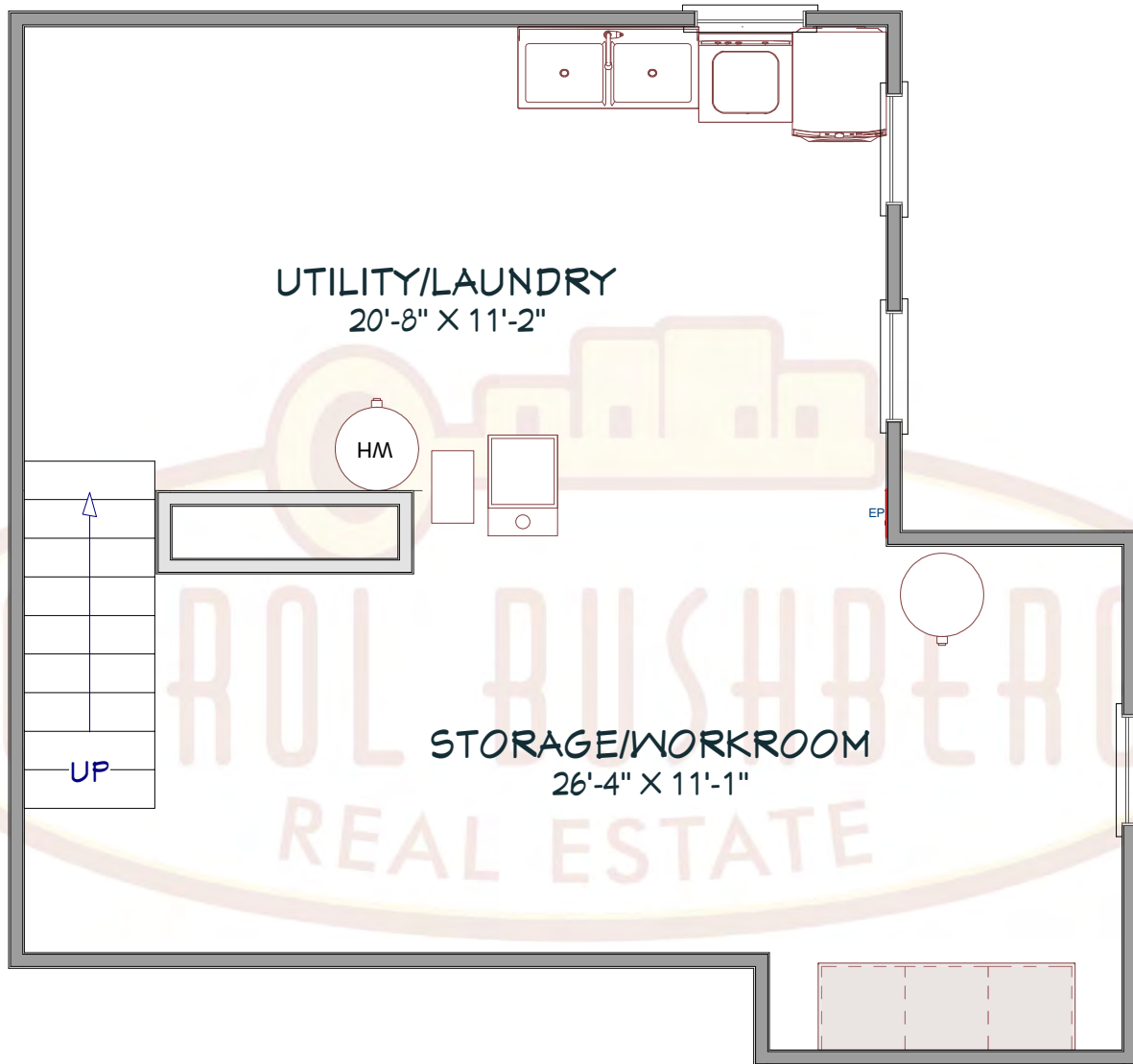
UPPER LEVEL  
LIVING AREA  
539 SQ FT

Please note: This plan was drawn by a Realtor, not an architect. As a result, the measurements are approximate and some elements of the property may be missing altogether. We do our best.



Please note: This plan was drawn by a Realtor, not an architect. As a result, the measurements are approximate and some elements of the property may be missing altogether. We do our best.

109 Worth Street  
Ithaca, NY 14850  
Basement Level



**UNFINISHED BASEMENT  
AREA**

569 SQ FT

Please note: This plan was drawn by a Realtor, not an architect. As a result, the measurements are approximate and some elements of the property may be missing altogether. We do our best.

109 Worth Street  
Ithaca, NY 14850  
Basement Level



Please note: This plan was drawn by a Realtor, not an architect. As a result, the measurements are approximate and some elements of the property may be missing altogether. We do our best.